



www.evoproducts.com.au

1800 539 339

SALES AND TECHNICAL HOTLINE



Why is the EVO system superior ?

Evo is a waterproofing and efflorescence prevention and system

Permanent U.S polyester polymer technology, environmentally safe, water based liquid, UV stable and chemically resistant.

When introduced into concrete and masonry, polyester solidifies inside the pores and capillary tracts giving the surface interface up to a possible further 15% compressive strength.

Eliminates the threat of water carrying efflorescence from ever reaching the surface due to the limited water vapour transmission, protects against staining and atmospheric pollution.

Can be coated with paints, cement rendered over or left natural.

Existing marketed products which cannot be coated or rendered have a base chemistry of either acrylic, silane or siloxane (most petroleum based) which are only temporary surface sealants (**water resistant**) therefore subject to wearing and weathering and tend to migrate from the surface.

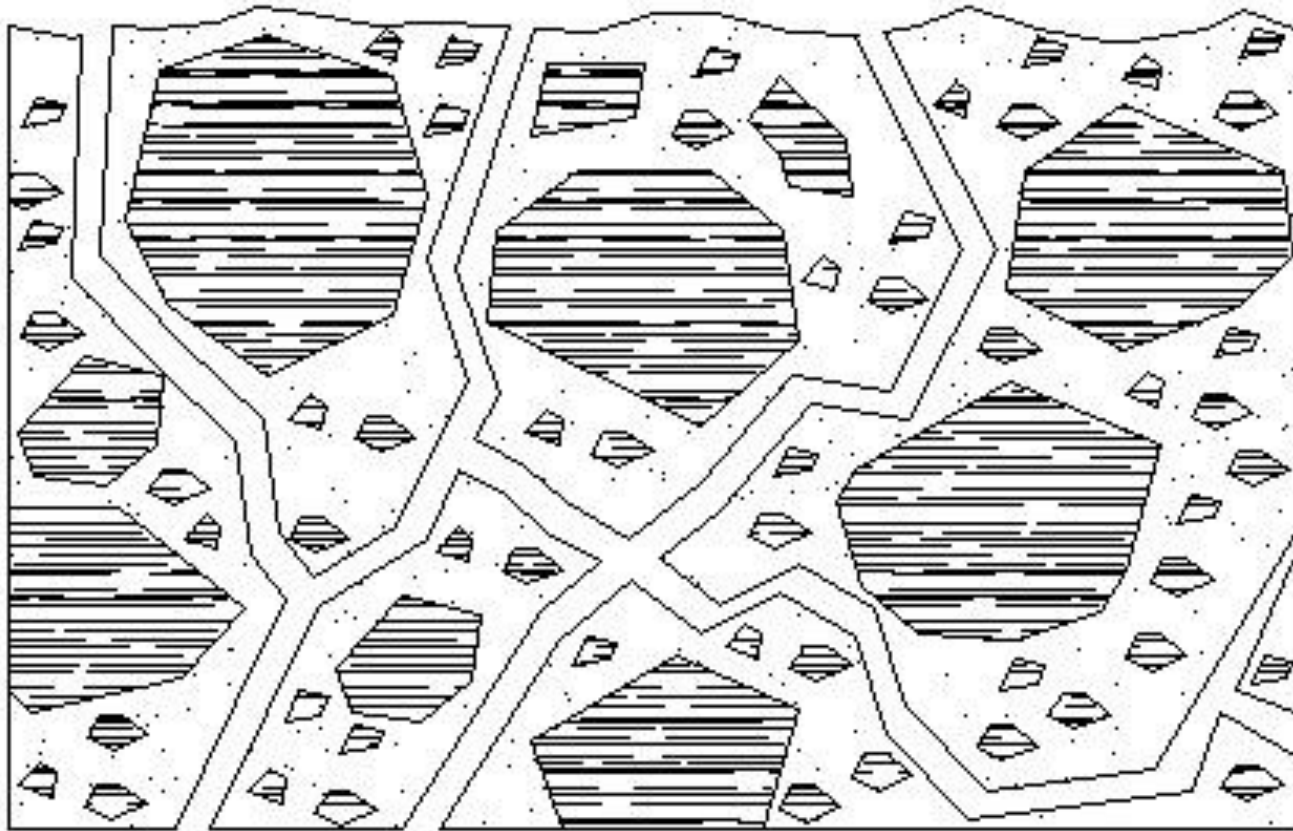
Used in conjunction with the Evo cleaning systems for preventive and remedial situations will provide a 10 year product warranty.



TYPICAL APPLICATIONS :

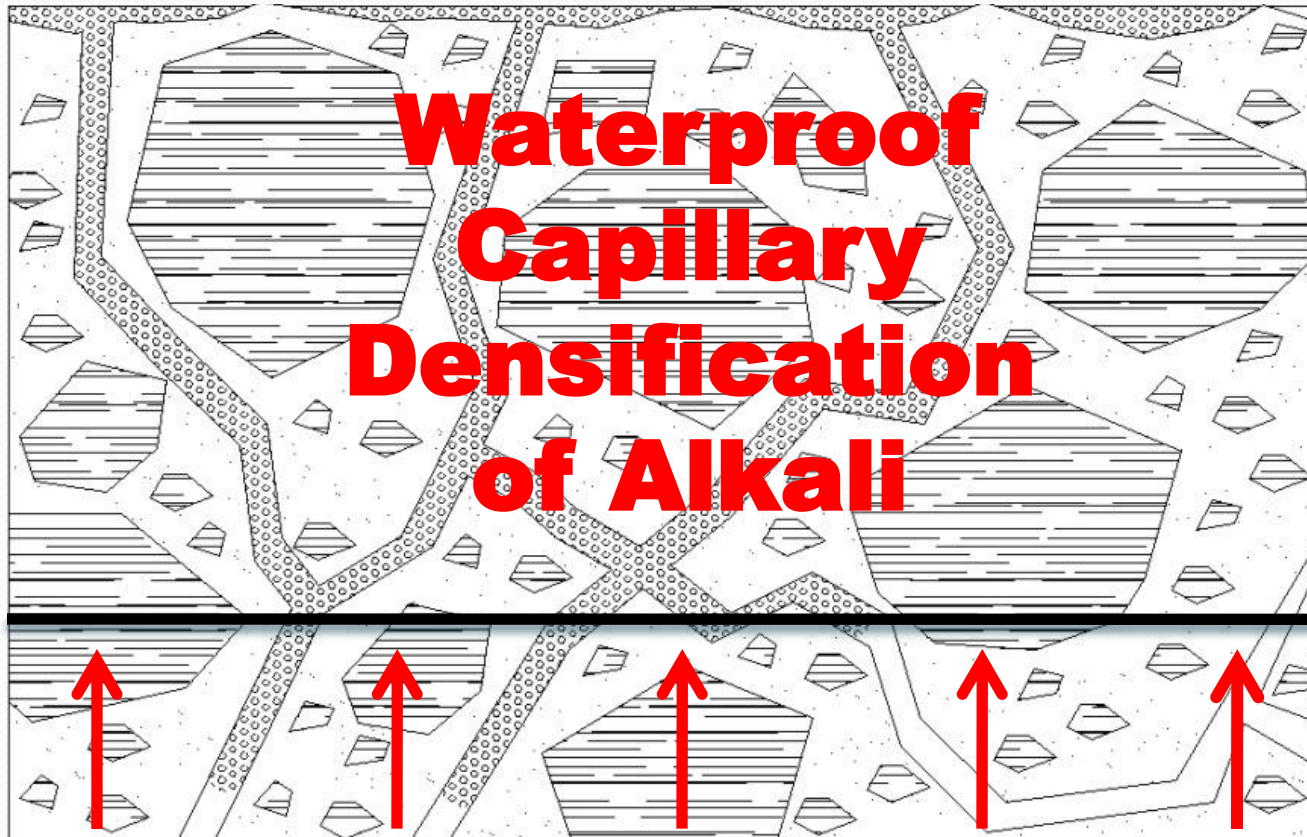
- Waterproofing of concrete, concrete blocks, bricks, tiles & natural stone.
- Prevention and remedial systems for efflorescence.(salt)
- Waterproofing, curing & densification of concrete slabs & facades.
- Solutions for peeling of structural & decorative coatings on masonry surfaces.
- Negative waterproofing systems for all types of porous masonry.
- Prevention and curing of rising damp in masonry structures
- Waterproofing and densification of tile beds before or after tiling
Preventing moisture ingress and efflorescence.
- Hardening and waterproofing of grouts and gypsums.
- Application under elastomeric waterproofing membranes to prevent delamination due to evaporation or hydrostatic pressure.

CROSS SECTION CONCRETE CAPILLARY SYSTEM



Moisture Carrying Free Lime, Salt and Calcium to the surface due to the process of evaporation

CURED EVO SYSTEM



Permanent

Internal

Membrane

Moisture Carrying Free Lime, Salt
and Calcium



ASTM C-31: Increase of Compressive Strength in concrete tested with Evo – Seal™

ASTM C-672: Chloride Penetration Resistance - No Chloride Penetration at any depth.

ASTM - 413: Water Absorption of Chemical Resistant Concrete/Mortar Surfaces. Test Results show concrete positively waterproofed, inhibiting corrosion.



ASTM C-67: Section 10: Efflorescence

AASHTO- T259 - 89: Chloride Ion Penetration



BS 1881: Part 122 : Method for determination of Water Absorption.

BS - 1881 - 122: 1983 : - Water absorption of concrete cylinders.



AS 1012.21: - Standard test method for density and absorption. Shall not exceed 1.0% after 48 hours or 2.0% after 50 days.

GHD Engineering



Negative Hydrostatic Pressure Test. :- Passed 60 psi. no visible failure. Procedure for determination of Water Permeability of Concrete. GHD standard test method.

NE- No Effect

M –Moderate Effect

S- Severe Effect

Chemical Resistance Guide

Alcohols

NE-Benzyl Alcohol

NE-Ethyl

NE-Isopropyl Alcohol

NE-Methyl Alcohol

NE-Ethylene Glycol

NE-Methyl Ethyl Ketone

Hydroraulic Fluids

NE-Oronite

NE-Pydural F9

NE-Pydural 60

NE-Skydrol

NE-Skydrol 500

Oils & Fuels

NE-ASTM No.1 oil

NE-ASTM No.2 oil

NE-ASTM No.3 Oil

NE-ASTM Fuel A

NE-ASTM Fuel B

NE-ASTM Fuel C

NE-Heating Fuel

NE-Jet Aircraft Fuel

Aldehydes

NE-Bezaldhyde

NE-Butraldhyde

NE-Furfural

Ketones

NE-Acetone

Inorganic Bases

NE-Barium

Hydroxide Conc

NE-Calcium

Hydroxide Conc

Substituted

Hydrocarbons

NE-Carbon Disulphide

NE-Nitrobenzene

NE-Transmission Fluid

Miscellaneous

NE-Antifreeze

NE-Brake Fluid

Natural Fats & Oils

NE-Butter

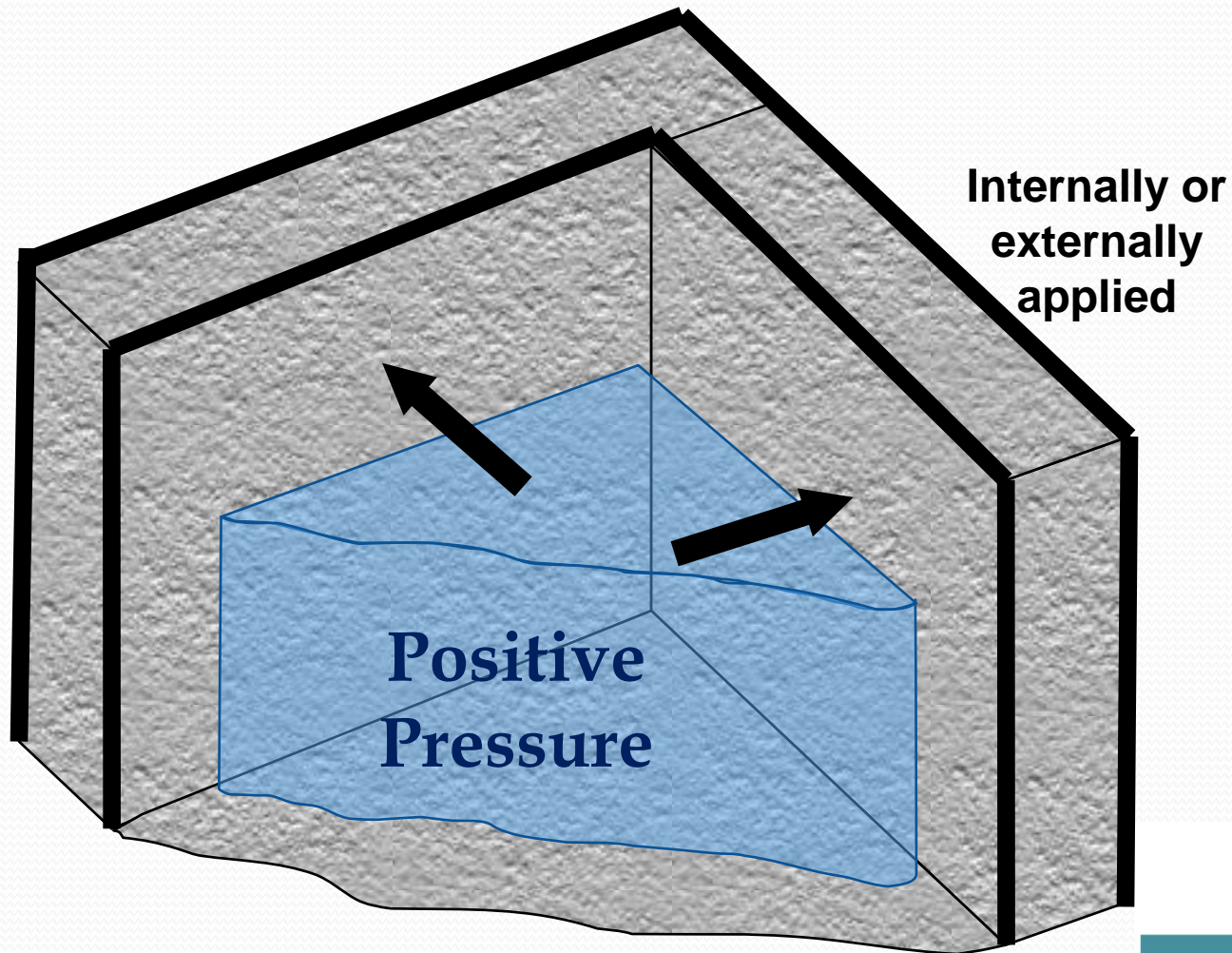
NE-Castor Oil

NE-Cottonseed Oil

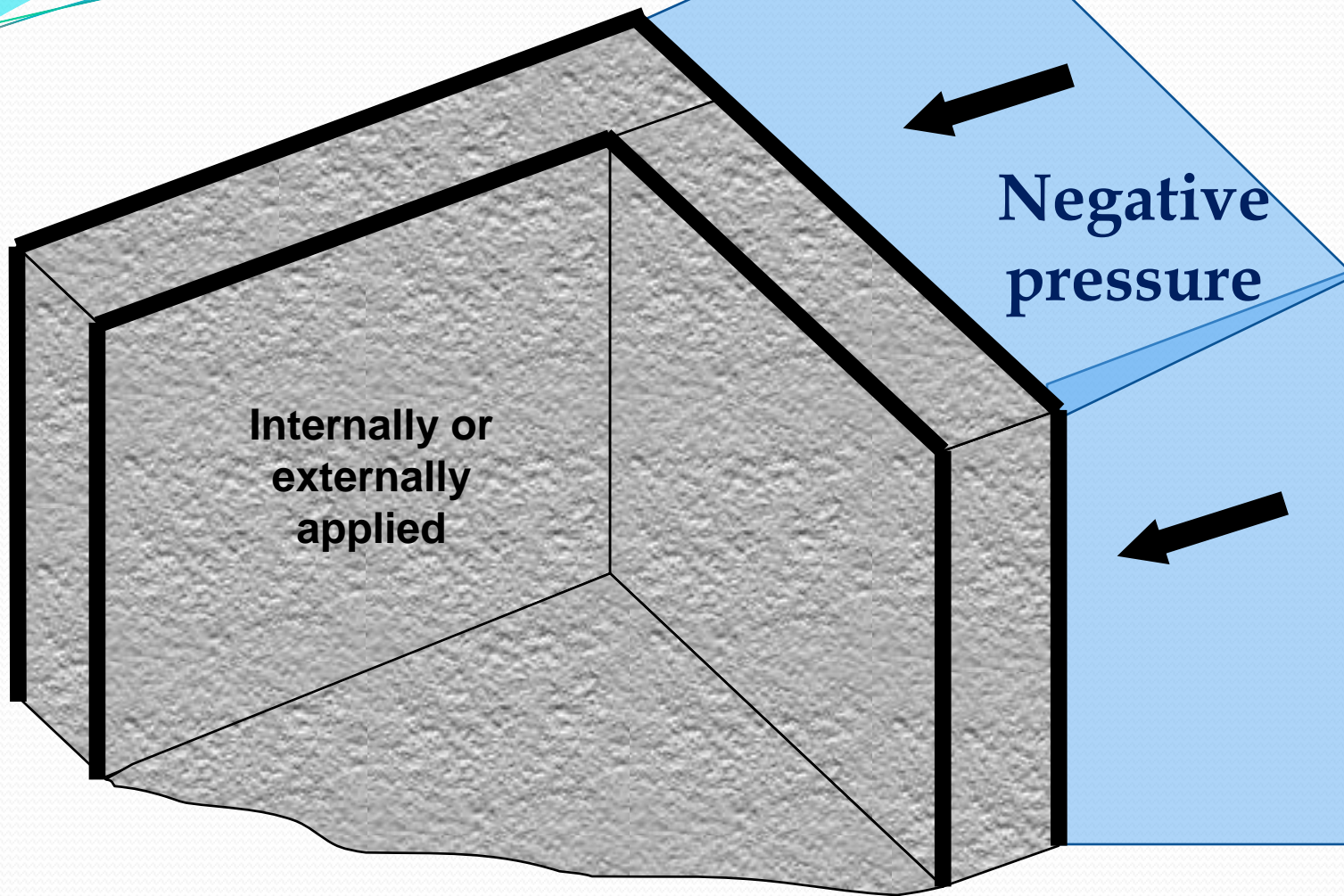
NE-Lard/Grease

NE-Olive Oil

Evo Seal Positive Pressure withstands 60 Psi (4.1 BAR)



Evo Seal Indirect Pressure Tested to withstands 60Psi (4.1 BAR)



3 Basic Limitations

- Applied dry to damp
- Product is required to be absorbed into the structure
- Is not designed to fill holes or structural cracking more than 500 micron

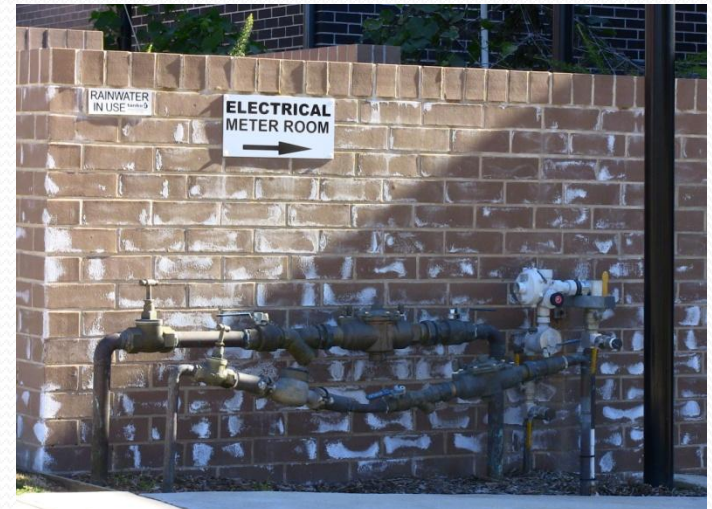
EVO POLYESTER POLYMER WATERPROOFING AND EFFLORESCENCE SYSTEMS

- **EVO SEAL**
- **EVO TRAFFICSEAL**
- **EVO BLOCKSEAL**





- Sprayed or rolled with the ability to penetrate up to 100 mm in concrete,
- Performs inside the structure unlike typical membranes
- Permanent, transparent, water based , fast curing, UV stable, increases compressive strength and may be used on “green concrete”
- Positive or negative waterproofing system not just resistant.
- For efflorescence prevention and remedial.
- Negatively tested to 4 bar (60psi).
- Structurally strengthens.
- Will not change external appearance.
- Cures 500 micron under the surface for exceptional bonding capabilities for any desired future coating if required.
- Used for concrete, render, bricks and natural stone (low porosity surfaces) . Coverage 4-6 sq mtrs/Ltr

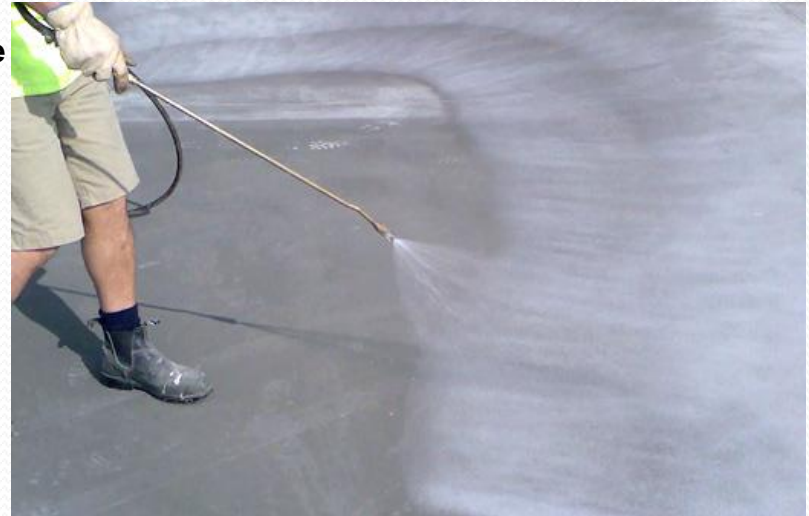


Typical Remedial Situation



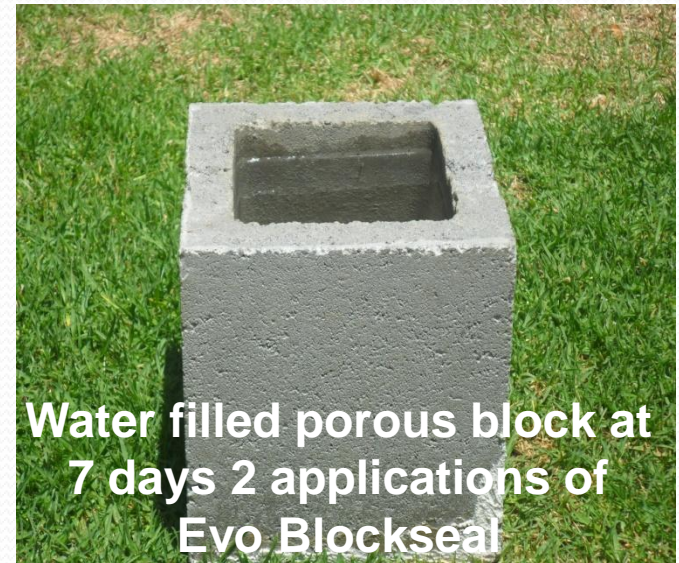


- **Manufactured with Evo Seal base chemistry with the incorporation of a topical, UV stable, polyurethane formula.**
- **During initial cure, polyurethane rises to the top to create a monolithic surface with minimum loss of slip resistance.**
- **Sprayed or rolled with the ability to penetrate deep into concrete and masonry.**
- **Easily cleanable with anti graffiti protective properties.**
- **Permanent, transparent, water based, fast curing, UV stable, increases compressive strength and may be used on “green concrete”**
- **Positive or negative waterproofing system not just resistant.**
- **For efflorescence prevention and remedial.**
- **Outperforms all silicone based and standard acrylic solutions.**
- **Negatively tested to 4 bar (60psi).**
- **Used for concrete, render, bricks and natural stone (low porosity surfaces) . Suitable for vehicular traffic areas, garages, fuel filling stations, sewer and high chemical environments Coverage 4-6 sq mtrs/Ltr**





- **Manufactured with Evo Seal base chemistry with the incorporation of a high density specially formulated acrylic.**
- **Applied by spray or roller capabilities for any desired future coating if required.**
- **Higher viscosity than Evo Seal for larger pored surfaces**
- **Performs inside the structure unlike typical membranes**
- **Permanent, transparent, water based , UV stable, increases compressive strength.**
- **Positive or negative fast curing waterproofing system.**
- **For efflorescence prevention or remedial.**
- **Slight sheen in appearance**
- **Completely fills all pores and waterproofs.**
- **Used for concrete blocks and large pored (medium to high porosity) surfaces eg sandstone Coverage 3- 4 sq mtrs/Ltr.**



EVO SURFACE PREPARATION & CLEANING FORMULATIONS



EVO-SALTAWAY is an INDUSTRIAL STRENGTH efflorescence (SALT) remover specially formulated for industrial, commercial and residential use. Used in conjunction with the **EVO -SEAL** waterproofing system to prevent any future efflorescence.



EVO-CONCRETECLEAN is fluid applied degreaser and cleaner specially formulated for industrial, commercial and residential use that restores the natural colour of new concrete and used prior to sealing with **EVO- TRAFFICSEAL**.



EVO-POWERCLEAN is high strength, all purpose concentrated degreaser and cleaning formulation, containing surfactants specially formulated for industrial, commercial and high strength residential use. Used for the removal of dirt and organics in preparation to sealing.



EVO-BOND is a 100% ACRYLIC INDUSTRIAL STRENGTH admixture. A longer lasting acrylic composition for adding to cement mixtures for better workability and unequalled render adhesion to non porous surfaces. Used for rendering over structures containing **EVO- SEAL**.





**MASONRY
WATERPROOFING
SYSTEMS**

**Waterproofing and
efflorescence
prevention**



EVO
PRODUCT RANGE

Waterproofing cement blocks and retaining walls



Concrete waterproofing and densification



**Tile and paver waterproofing
and efflorescence
prevention**

Sealing and waterproofing cement roof tiles and pointing



**Cleaning and sealing
efflorescence in masonry
structures**





**Sealing internal and external balcony
slabs and tile beds prior to tiling to
prevent moisture ingress to prevent
efflorescence**



Waterproofs and hardens porous natural stone



Waterproofing and protection of cement render before applying a paint finish.

Thank you
for your
interest

